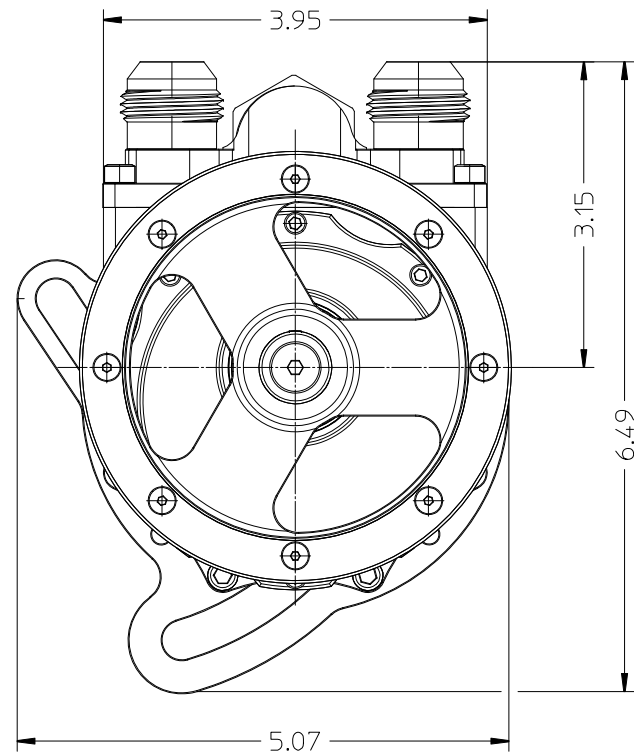


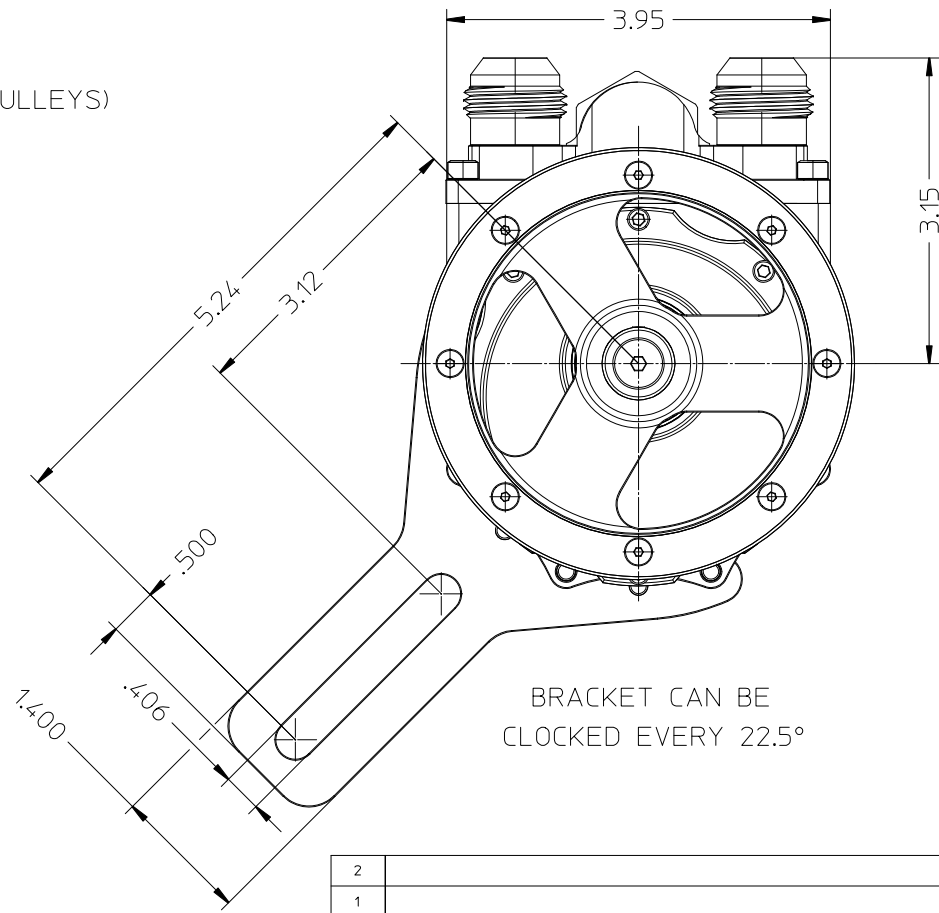
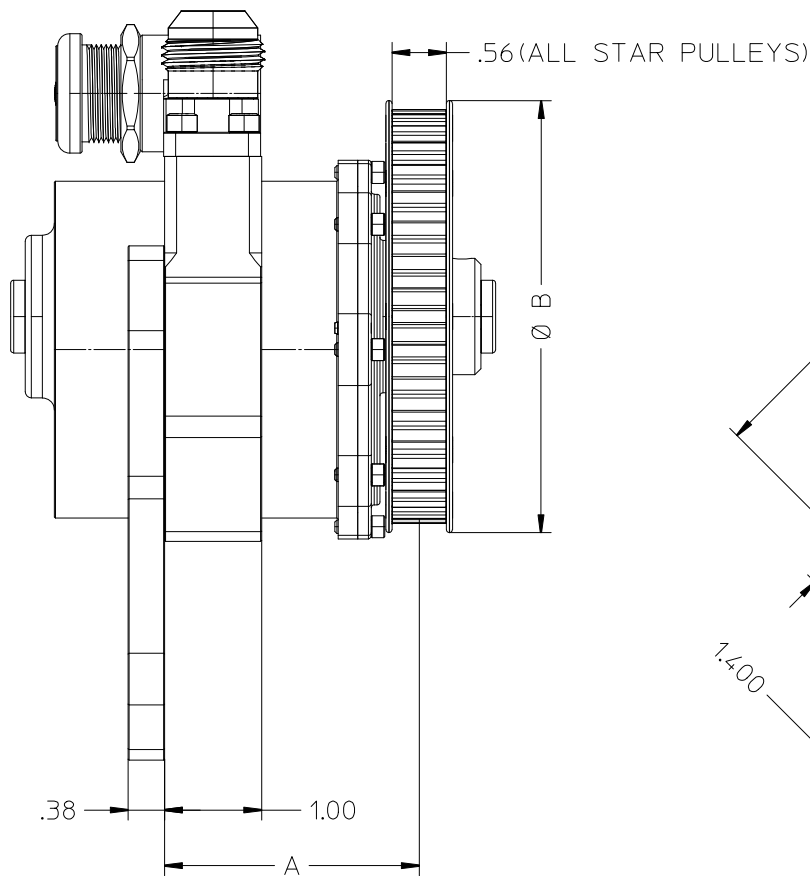
STAND LENGTH NOTES  
 STANDARD LENGTH = 2.25"  
 STANDS AVAILABLE IN 0.125" INCREMENTS  
 MINIMUM LENGTH IS 1.50"  
 MAXIMUM LENGTH IS 4.00"  
 CUSTOM LENGTHS AVAILABLE ON REQUEST



BRACKET CAN BE  
 CLOCKED EVERY 22.5°

PULLEY	A DIMENSION WITH 2.25" STAND	A DIMENSION (PULLEY REVERSED) WITH 2.25" STAND	B DIMENSIONS (PULLEY DIAMETERS)
GEN1 36T ALUMINUM PULLEY STR.02.07.008 (SHOWN)	5.37"	5.81"	4.45"
GEN1 24T ALUMINUM PULLEY STR.03.12.000	5.37"	5.81"	2.98"
GEN2 24T ALUMINUM PULLEY STR.03.12.000	5.37"	5.81"	2.98"
GEN3 24T ALUMINUM PULLEY STR.20.06.100	5.65"	5.54"	3.10"
ALL COMPOSITE PULLEYS 24T 36T 40T	5.65"	NOT POSSIBLE	24 TOOTH = 3.14" 36 TOOTH = 4.45" 40 TOOTH = 5.00"

2																														
1																														
0																														
REV.	REVISION DESCRIPTION			DATE																										
<b>STAR MACHINE</b> 7810 OAK AVENUE PARKVILLE, MD. 21234		DESCRIPTION LAYOUT DIMENSIONS, GEN2 STANDARD PUMP WITH REAR MOUNTING BRACKET STR.99.06.10 HEAT TREATING MATERIAL HARDNESS DEPTH DESIGNED BY T HIGDON SURFACE PREPARATION SCALE SHEET 1 OF 1 SIZE B FINISH DRAWING NO. STR.03.01.000																												
TOLERANCES UNLESS SPECIFIED <table border="1"> <thead> <tr> <th>LINEAR (INCHES)</th> <th>ANGULAR</th> </tr> </thead> <tbody> <tr> <td>0.05--10 ± 0.005</td> <td>0-90 ± 0.25°</td> </tr> <tr> <td>11--20 ± 0.010</td> <td>91-180 ± 0.50°</td> </tr> <tr> <td>21--30 ± 0.015</td> <td>181-270 ± 0.75°</td> </tr> <tr> <td>31--40 ± 0.020</td> <td>271-360 ± 1.00°</td> </tr> <tr> <td>44--50 ± 0.030</td> <td></td> </tr> <tr> <td>51--100 ± 0.050</td> <td></td> </tr> </tbody> </table>		LINEAR (INCHES)	ANGULAR	0.05--10 ± 0.005	0-90 ± 0.25°	11--20 ± 0.010	91-180 ± 0.50°	21--30 ± 0.015	181-270 ± 0.75°	31--40 ± 0.020	271-360 ± 1.00°	44--50 ± 0.030		51--100 ± 0.050		GEOMETRIC (INCHES) <table border="1"> <thead> <tr> <th>FORM</th> <th>TOLERANCE</th> </tr> </thead> <tbody> <tr> <td></td> <td>0.05-20 0.005</td> </tr> <tr> <td></td> <td>21--40 0.010</td> </tr> <tr> <td></td> <td>41--50 0.015</td> </tr> <tr> <td></td> <td>51--100 0.020</td> </tr> <tr> <td></td> <td>0-100 0.015</td> </tr> </tbody> </table>			FORM	TOLERANCE		0.05-20 0.005		21--40 0.010		41--50 0.015		51--100 0.020		0-100 0.015
LINEAR (INCHES)	ANGULAR																													
0.05--10 ± 0.005	0-90 ± 0.25°																													
11--20 ± 0.010	91-180 ± 0.50°																													
21--30 ± 0.015	181-270 ± 0.75°																													
31--40 ± 0.020	271-360 ± 1.00°																													
44--50 ± 0.030																														
51--100 ± 0.050																														
FORM	TOLERANCE																													
	0.05-20 0.005																													
	21--40 0.010																													
	41--50 0.015																													
	51--100 0.020																													
	0-100 0.015																													
BREAK ALL EDGES UNLESS SPECIFIED THIS DRAWING IS THE PROPERTY OF STAR MACHINE. IT SHALL NOT BE DISCLOSED OR COPIED WITHOUT THE WRITTEN AUTHORIZATION OF STAR MACHINE.																														

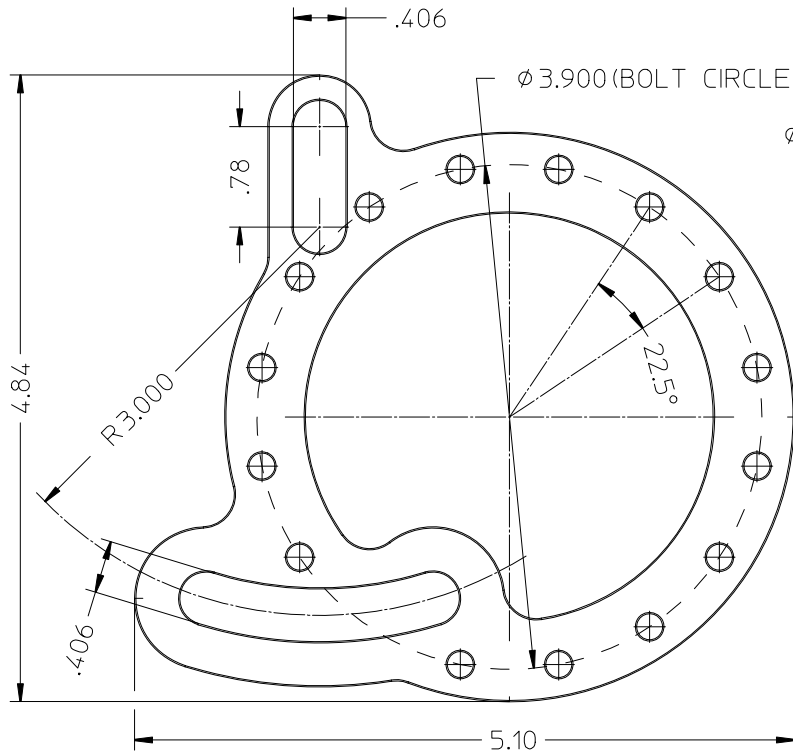


PULLEY	A DIMENSION	A DIMENSION (PULLEY REVERSED)	B DIMENSION (PULLEY DIAMETER)
GEN1 36T ALUMINUM PULLEY STR.02.07.008 (SHOWN)	2.62"	3.06"	4.45"
GEN1 24T ALUMINUM PULLEY STR.03.12.000	2.62"	3.06"	2.98"
GEN2 24T ALUMINUM PULLEY STR.03.12.000	2.62"	3.06"	2.98"
GEN3 24T ALUMINUM PULLEY STR.20.06.100	2.89"	2.78"	3.10"
ALL COMPOSITE PULLEYS 24T 36T 40T	2.62"	NOT POSSIBLE	24 TOOTH = 3.14 36 TOOTH = 4.45 40 TOOTH = 5.00"

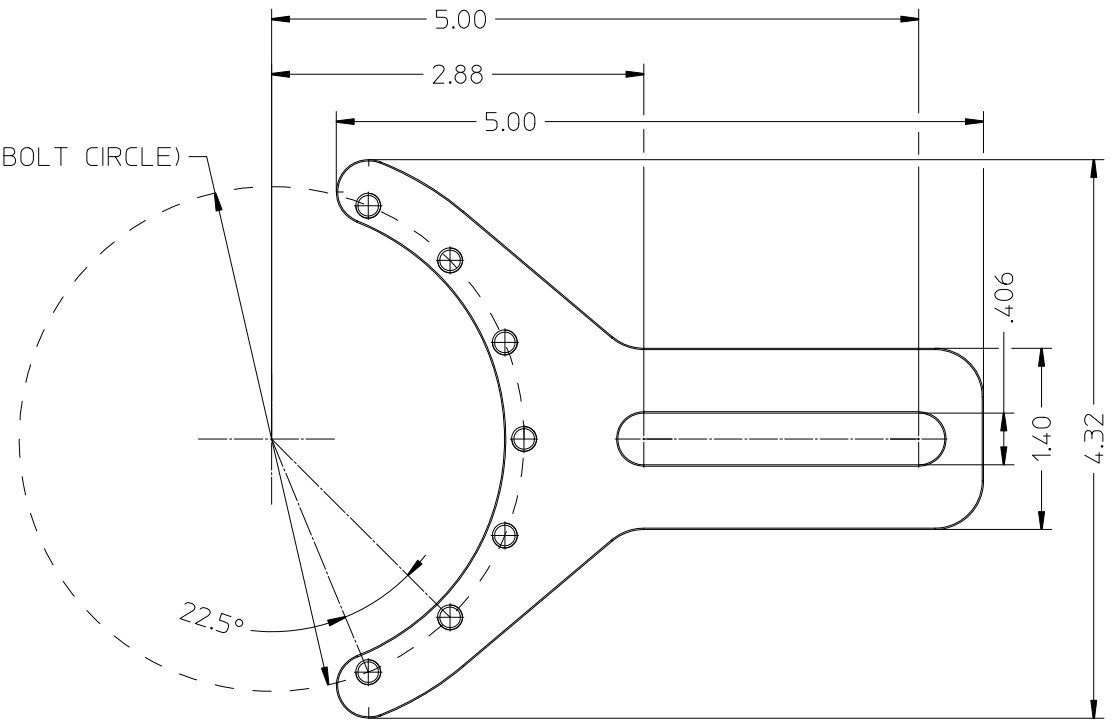
REV.	REVISION DESCRIPTION	DATE
2		
1		
0		

**STAR MACHINE**  
7810 OAK AVENUE  
PARKVILLE, MD. 21234

DESCRIPTION	LAYOUT DIMENSIONS, GEN2 STANDARD PUMP WITH SIDE MOUNTING BRACKET STR.99.06.11																							
HEAT TREATING	MATERIAL																							
HARDNESS	DEPTH	DESIGNED BY T HIGDON																						
SURFACE PREPARATION	FINISH	SCALE 1 OF 1	SHEET B																					
TOLERANCES UNLESS SPECIFIED		DRAWING NO. STR.03.01.000																						
<table border="1"> <thead> <tr> <th>LINEAR (INCHES)</th> <th>ANGULAR</th> </tr> </thead> <tbody> <tr> <td>0.05--10 ± 0.005</td> <td>0-90 ± 0.25°</td> </tr> <tr> <td>11--20 ± 0.010</td> <td>91-180 ± 0.50°</td> </tr> <tr> <td>21--30 ± 0.015</td> <td>181-270 ± 0.75°</td> </tr> <tr> <td>31--40 ± 0.020</td> <td>271-360 ± 1.00°</td> </tr> <tr> <td>44--50 ± 0.030</td> <td></td> </tr> <tr> <td>51--100 ± 0.050</td> <td></td> </tr> </tbody> </table>		LINEAR (INCHES)	ANGULAR	0.05--10 ± 0.005	0-90 ± 0.25°	11--20 ± 0.010	91-180 ± 0.50°	21--30 ± 0.015	181-270 ± 0.75°	31--40 ± 0.020	271-360 ± 1.00°	44--50 ± 0.030		51--100 ± 0.050		<table border="1"> <thead> <tr> <th>GEOMETRIC (INCHES)</th> </tr> </thead> <tbody> <tr> <td>0.05-10 ± 0.005</td> </tr> <tr> <td>11--20 ± 0.010</td> </tr> <tr> <td>21--30 ± 0.015</td> </tr> <tr> <td>31--40 ± 0.020</td> </tr> <tr> <td>44--50 ± 0.030</td> </tr> <tr> <td>51--100 ± 0.050</td> </tr> </tbody> </table>		GEOMETRIC (INCHES)	0.05-10 ± 0.005	11--20 ± 0.010	21--30 ± 0.015	31--40 ± 0.020	44--50 ± 0.030	51--100 ± 0.050
LINEAR (INCHES)	ANGULAR																							
0.05--10 ± 0.005	0-90 ± 0.25°																							
11--20 ± 0.010	91-180 ± 0.50°																							
21--30 ± 0.015	181-270 ± 0.75°																							
31--40 ± 0.020	271-360 ± 1.00°																							
44--50 ± 0.030																								
51--100 ± 0.050																								
GEOMETRIC (INCHES)																								
0.05-10 ± 0.005																								
11--20 ± 0.010																								
21--30 ± 0.015																								
31--40 ± 0.020																								
44--50 ± 0.030																								
51--100 ± 0.050																								
<table border="1"> <thead> <tr> <th>GEOMETRIC (INCHES)</th> </tr> </thead> <tbody> <tr> <td>0-90 ± 0.25°</td> </tr> <tr> <td>91-180 ± 0.50°</td> </tr> <tr> <td>181-270 ± 0.75°</td> </tr> <tr> <td>271-360 ± 1.00°</td> </tr> </tbody> </table>		GEOMETRIC (INCHES)	0-90 ± 0.25°	91-180 ± 0.50°	181-270 ± 0.75°	271-360 ± 1.00°	<table border="1"> <thead> <tr> <th>GEOMETRIC (INCHES)</th> </tr> </thead> <tbody> <tr> <td>0-100 0.015</td> </tr> </tbody> </table>		GEOMETRIC (INCHES)	0-100 0.015														
GEOMETRIC (INCHES)																								
0-90 ± 0.25°																								
91-180 ± 0.50°																								
181-270 ± 0.75°																								
271-360 ± 1.00°																								
GEOMETRIC (INCHES)																								
0-100 0.015																								
BREAK ALL EDGES UNLESS SPECIFIED THIS DRAWING IS THE PROPERTY OF STAR MACHINE. IT SHALL NOT BE DISCLOSED OR COPIED WITHOUT THE WRITTEN AUTHORIZATION OF STAR MACHINE.																								



REAR MOUNTING BRACKET  
STR.99.06.10



SIDE MOUNTING BRACKET  
STR.99.06.11

2					
1					
0					
REV.	REVISION DESCRIPTION				DATE
<b>STAR MACHINE</b> 7810 OAK AVENUE PARKVILLE, MD. 21234		DESCRIPTION LAYOUT DIMENSIONS, PUMP MOUNTING BRACKETS HEAT TREATING _____ MATERIAL _____ HARDNESS _____ DEPTH _____ DESIGNED BY T HIGDON SURFACE PREPARATION _____ SCALE _____ SHEET 1 OF 1 SIZE B FINISH _____ DRAWING NO. _____ THIS DRAWING IS THE PROPERTY OF STAR MACHINE. IT SHALL NOT BE DISCLOSED OR COPIED WITHOUT THE WRITTEN AUTHORIZATION OF STAR MACHINE.			
TOLERANCES UNLESS SPECIFIED	LINEAR (INCHES) 0.05--10 ± 0.005 11--20 ± 0.010 21--30 ± 0.015 31--40 ± 0.020 44--50 ± 0.030 51--100 ± 0.050	ANGULAR 0-90 ± 0.25° 91-180 ± 0.50° 181-270 ± 0.75° 271-360 ± 1.00°	GEOMETRIC (INCHES) 0.05-20 0.005 21--40 0.010 41--50 0.015 51--100 0.020 0-100 0.015	BREAK ALL EDGES UNLESS SPECIFIED	
	<input type="checkbox"/> 0.05-10 ± 0.005 <input type="checkbox"/> 11--20 ± 0.010 <input type="checkbox"/> 21--30 ± 0.015 <input type="checkbox"/> 31--40 ± 0.020 <input type="checkbox"/> 44--50 ± 0.030 <input type="checkbox"/> 51--100 ± 0.050	<input type="checkbox"/> 0.05-20 0.005 <input type="checkbox"/> 21--40 0.010 <input type="checkbox"/> 41--50 0.015 <input type="checkbox"/> 51--100 0.020 <input type="checkbox"/> 0-100 0.015			