

PULLEY DIAMETERS	
36T ALUMINUM (SHOWN)	Ø4.45
24T ALUMINUM	Ø3.00
24T COMPOSITE	Ø3.12
36T COMPOSITE	Ø4.53
40T COMPOSITE	Ø5.00

STAND LENGTH NOTES
 THE STANDARD LENGTH IS 2.25"
 STANDS AVAILABLE IN 0.25" INCREMENTS
 THE MINIMUM LENGTH IS 1.75"
 THE MAXIMUM LENGTH IS 3.50"
 CUSTOM LENGTHS AVAILABLE IF REQUIRED

"A" DIMENSIONS WITH 2.25" STAND	
WITH 36T ALUMINUM PULLEY (SHOWN)	5.09
WITH 24T ALUMINUM PULLEY	5.09
WITH 24T COMPOSITE PULLEY	5.37
WITH 36T COMPOSITE PULLEY	5.37
WITH 40T COMPOSITE PULLEY	5.37

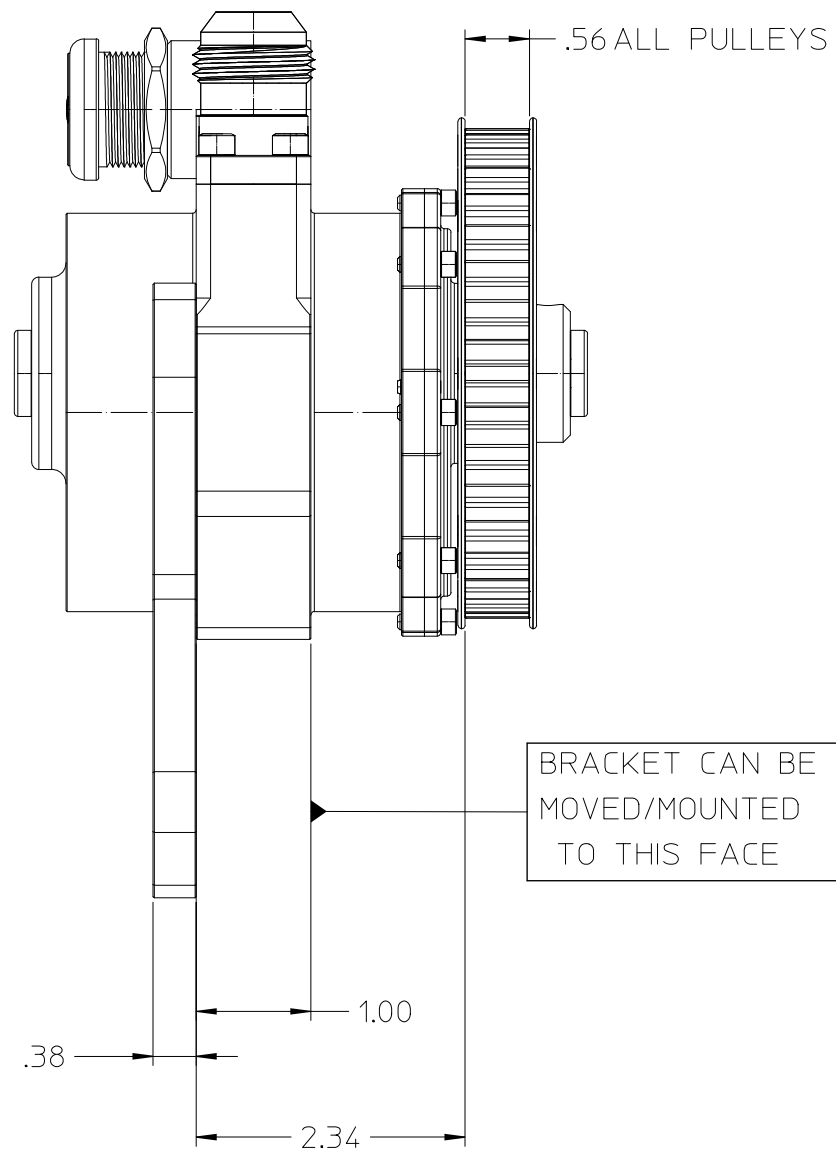
"A" DIMENSIONS WITH 1.75" MINIMUM LENGTH STAND	
WITH 36T ALUMINUM PULLEY (SHOWN)	4.59
WITH 24T ALUMINUM PULLEY	4.59
WITH 24T COMPOSITE PULLEY	4.87
WITH 36T COMPOSITE PULLEY	4.87
WITH 40T COMPOSITE PULLEY	4.87

2		
1		
0		
REV.	REVISION DESCRIPTION	DATE
	DESCRIPTION LAYOUT DIMENSIONS, GEN2 STANDARD PUMP	
HEAT TREATING		MATERIAL
HARDNESS		DEPTH
SURFACE PREPARATION		DESIGNED BY T HIGDON
FINISH		SCALE SHEET SIZE
		1 OF 1 B
		DRAWING NO. STR.03.01.000

star machine
 6018 Blackhead Road
 Baltimore, MD. 21220

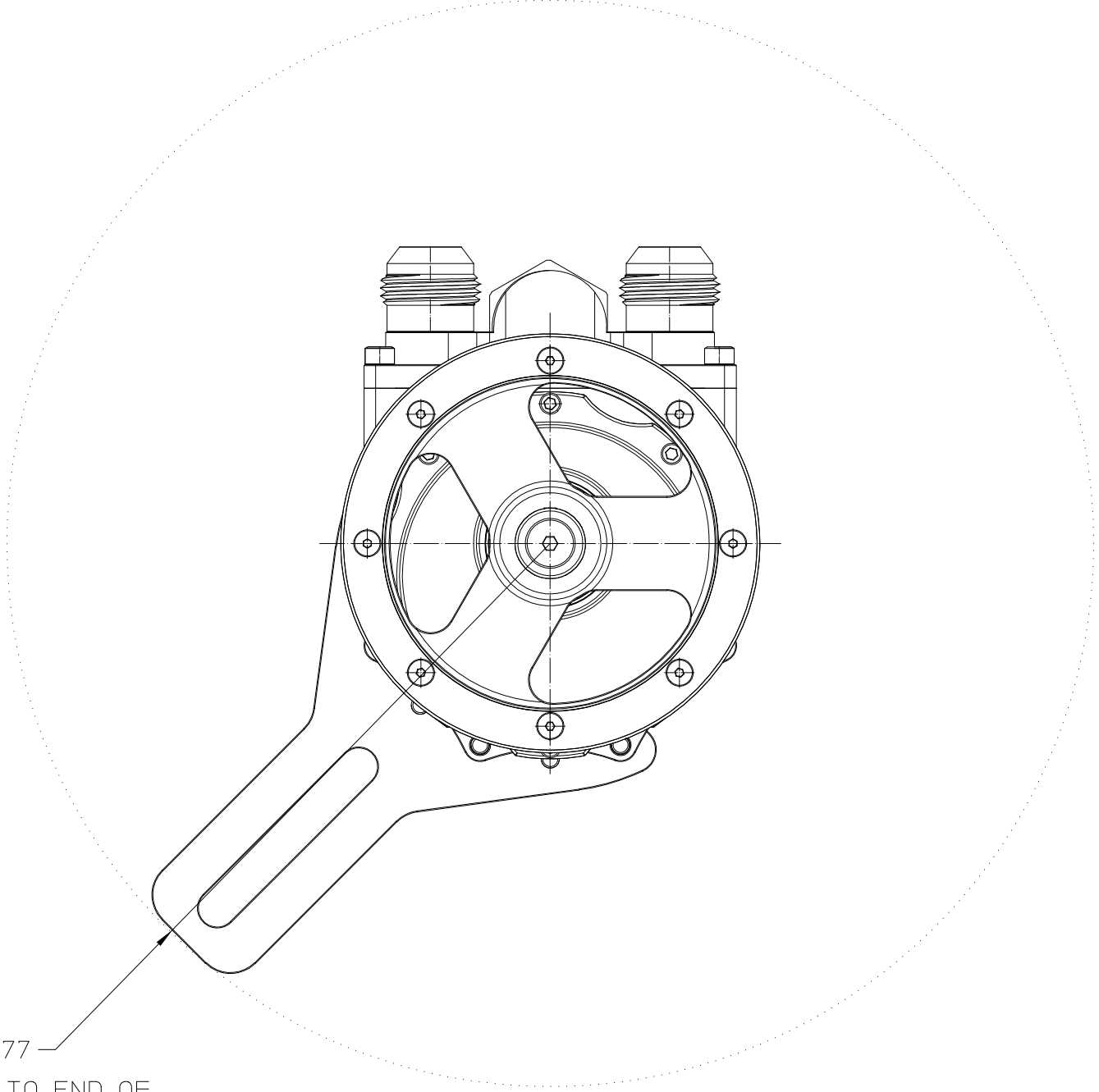
0.05--10 ± 0.005
 11--20 ± 0.010
 21--30 ± 0.015
 31--40 ± 0.020
 44--50 ± 0.030
 51--100 ± 0.050
 0.05--20 ± 0.005
 21--40 ± 0.010
 41--50 ± 0.015
 51--100 ± 0.020
 0.002
 0.010 0.015
 BREAK ALL EDGES (INCHES SPECIFIED)

THIS DRAWING IS THE PROPERTY OF STAR MACHINE. IT SHALL NOT BE DISCLOSED OR COPIED WITHOUT THE WRITTEN AUTHORIZATION OF STAR MACHINE.



5.77

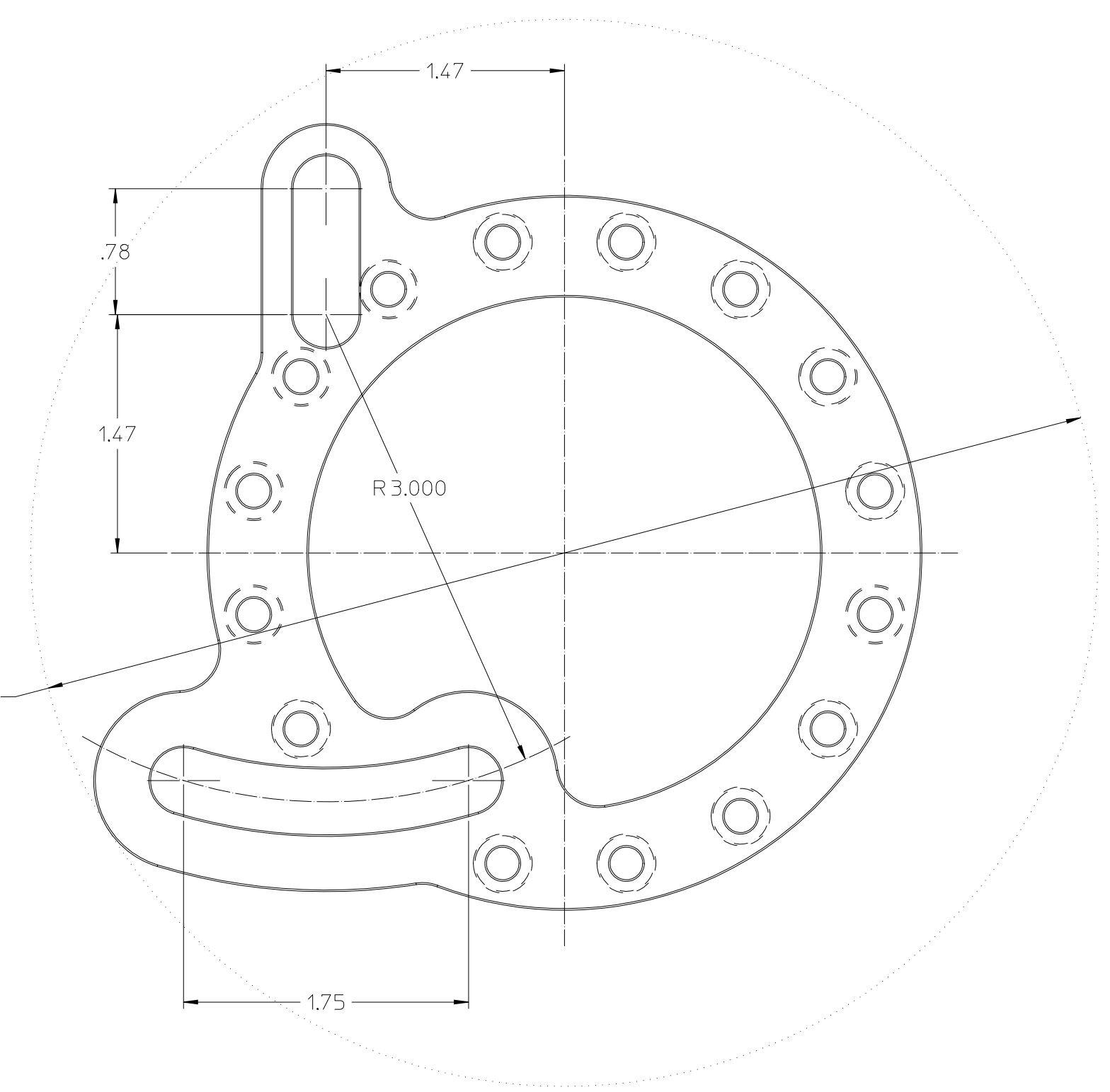
DIMENSION TO END OF BRACKET AS IT IS ROTATED ABOUT PUMP CENTER (BRACKET CAN BE ROTATED/FASTENED EVERY 22.5°)



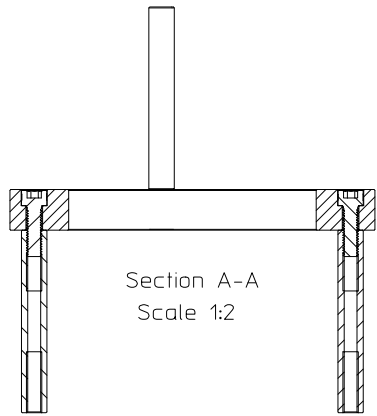
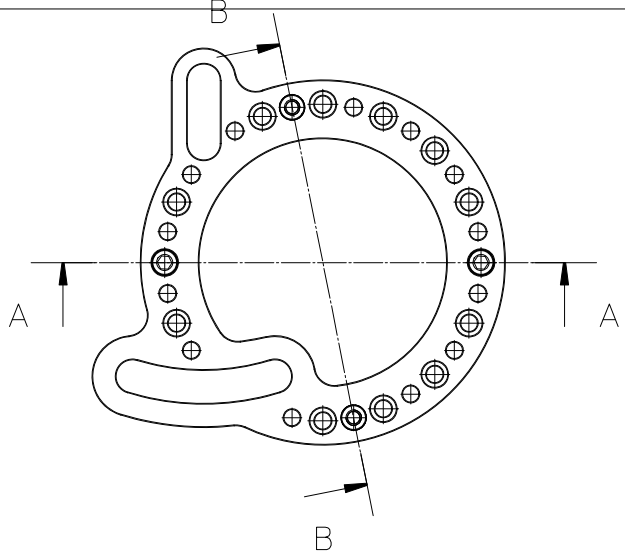
"A" DIMENSIONS WITH 2.25" STAND	
WITH 36T ALUMINUM PULLEY (SHOWN)	2.34
WITH 24T ALUMINUM PULLEY	2.34
WITH 24T COMPOSITE PULLEY	2.62
WITH 36T COMPOSITE PULLEY	2.62
WITH 40T COMPOSITE PULLEY	2.62

2		
1		
0		
REV.	REVISION DESCRIPTION	DATE
star machine 6018 Blackhead Road Baltimore, MD. 21220		
DESCRIPTION		LAYOUT DIMENSIONS, GEN2 PUMP WITH RED BRKT.
HEAT TREATING		MATERIAL
HARDNESS		DEPTH
SURFACE PREPARATION		DESIGNED BY T HIGDON
FINISH		SCALE SHEET SIZE 1 of 1 B
TOLERANCES (UNLESS SPECIFIED) LINEAR (INCHES) 0.05--10 ± 0.005 11--20 ± 0.010 21--30 ± 0.015 31--40 ± 0.020 44--50 ± 0.030 51--100 ± 0.050 ANGULAR 0-90 ± 0.25° 91-180 ± 0.50° 181-270 ± 0.75° 271-360 ± 1.00° GEOMETRIC (INCHES) 0.05--10 ± 0.005 11--20 ± 0.010 21--30 ± 0.015 31--40 ± 0.020 44--50 ± 0.030 51--100 ± 0.050 BREAK ALL EDGES (UNLESS SPECIFIED)		THIS DRAWING IS THE PROPERTY OF STAR MACHINE. IT SHALL NOT BE DISCLOSED OR COPIED WITHOUT THE WRITTEN AUTHORIZATION OF STAR MACHINE.

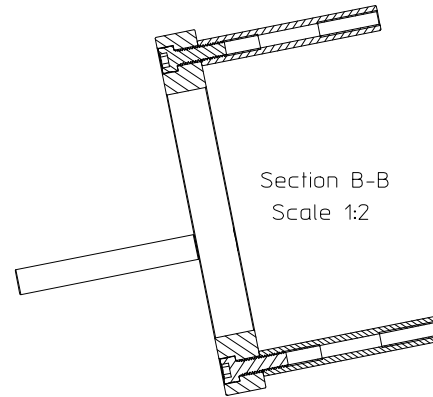
Ø 6.6
OVERALL SPACE REQUIREMENT
FOR "Q" BRACKET



2																
1																
0																
REV.	REVISION DESCRIPTION	DATE														
	DESCRIPTION "Q" BRACKET LAYOUT DIMENSIONS															
<i>star machine</i> 6018 Blackhead Road Baltimore, MD. 21220		HEAT TREATING														
<table border="1"> <thead> <tr> <th>LINEAR (INCHES)</th> <th>ANGULAR</th> </tr> </thead> <tbody> <tr> <td>0-.05--10 ± 0.005</td> <td>0-90 ± 0.25°</td> </tr> <tr> <td>11--20 ± 0.010</td> <td>91-180 ± 0.50°</td> </tr> <tr> <td>21--30 ± 0.015</td> <td>181-270 ± 0.75°</td> </tr> <tr> <td>31--40 ± 0.020</td> <td>271-360 ± 1.00°</td> </tr> <tr> <td>44--50 ± 0.030</td> <td></td> </tr> <tr> <td>51--100 ± 0.050</td> <td></td> </tr> </tbody> </table>		LINEAR (INCHES)	ANGULAR	0-.05--10 ± 0.005	0-90 ± 0.25°	11--20 ± 0.010	91-180 ± 0.50°	21--30 ± 0.015	181-270 ± 0.75°	31--40 ± 0.020	271-360 ± 1.00°	44--50 ± 0.030		51--100 ± 0.050		MATERIAL
LINEAR (INCHES)	ANGULAR															
0-.05--10 ± 0.005	0-90 ± 0.25°															
11--20 ± 0.010	91-180 ± 0.50°															
21--30 ± 0.015	181-270 ± 0.75°															
31--40 ± 0.020	271-360 ± 1.00°															
44--50 ± 0.030																
51--100 ± 0.050																
<table border="1"> <thead> <tr> <th>HARDNESS</th> <th>DEPTH</th> </tr> </thead> <tbody> <tr> <td>0.05--10 ± 0.005</td> <td>0.05--20 0.005</td> </tr> <tr> <td>11--20 ± 0.010</td> <td>21--40 0.010</td> </tr> <tr> <td>21--30 ± 0.015</td> <td>41--50 0.015</td> </tr> <tr> <td>31--40 ± 0.020</td> <td>51--100 0.020</td> </tr> <tr> <td>44--50 ± 0.030</td> <td></td> </tr> <tr> <td>51--100 ± 0.050</td> <td></td> </tr> </tbody> </table>		HARDNESS	DEPTH	0.05--10 ± 0.005	0.05--20 0.005	11--20 ± 0.010	21--40 0.010	21--30 ± 0.015	41--50 0.015	31--40 ± 0.020	51--100 0.020	44--50 ± 0.030		51--100 ± 0.050		DESIGNED BY T HIGDON
HARDNESS	DEPTH															
0.05--10 ± 0.005	0.05--20 0.005															
11--20 ± 0.010	21--40 0.010															
21--30 ± 0.015	41--50 0.015															
31--40 ± 0.020	51--100 0.020															
44--50 ± 0.030																
51--100 ± 0.050																
<table border="1"> <thead> <tr> <th>SURFACE PREPARATION</th> <th>SCALE</th> <th>SHEET</th> <th>SIZE</th> </tr> </thead> <tbody> <tr> <td></td> <td>2 OF 2</td> <td>2 OF 2</td> <td>B</td> </tr> </tbody> </table>		SURFACE PREPARATION	SCALE	SHEET	SIZE		2 OF 2	2 OF 2	B	DRAWING NO.						
SURFACE PREPARATION	SCALE	SHEET	SIZE													
	2 OF 2	2 OF 2	B													
<table border="1"> <thead> <tr> <th>GEOMETRIC (INCHES)</th> </tr> </thead> <tbody> <tr> <td>0.05--10 ± 0.005</td> </tr> <tr> <td>11--20 ± 0.010</td> </tr> <tr> <td>21--30 ± 0.015</td> </tr> <tr> <td>31--40 ± 0.020</td> </tr> <tr> <td>44--50 ± 0.030</td> </tr> <tr> <td>51--100 ± 0.050</td> </tr> </tbody> </table>		GEOMETRIC (INCHES)	0.05--10 ± 0.005	11--20 ± 0.010	21--30 ± 0.015	31--40 ± 0.020	44--50 ± 0.030	51--100 ± 0.050	FINISH							
GEOMETRIC (INCHES)																
0.05--10 ± 0.005																
11--20 ± 0.010																
21--30 ± 0.015																
31--40 ± 0.020																
44--50 ± 0.030																
51--100 ± 0.050																
THIS DRAWING IS THE PROPERTY OF STAR MACHINE. IT SHALL NOT BE DISCLOSED OR COPIED WITHOUT THE WRITTEN AUTHORIZATION OF STAR MACHINE.																



Section A-A
Scale 1:2



Section B-B
Scale 1:2

INSTALL #10-32 X 5/8" LONG IN COUNTER BORED HOLES
AS SHOWN IN SECTIONS A-A OR B-B

2		
1		
0	ADDED C'BORE HOLES TO BACK SIDE	9/23
REV.	REVISION DESCRIPTION	DATE

STAR MACHINE
7810 OAK AVENUE
PARKVILLE, MD. 21234

DESCRIPTION

HEAT TREATING

MATERIAL

6061-T6 ALUMINUM

HARDNESS

DEPTH

DESIGNED BY

T HIGDON

SURFACE PREPARATION

SCALE

SHEET

SIZE

1 OF 1

A

FINISH

BLACK ANODIZE

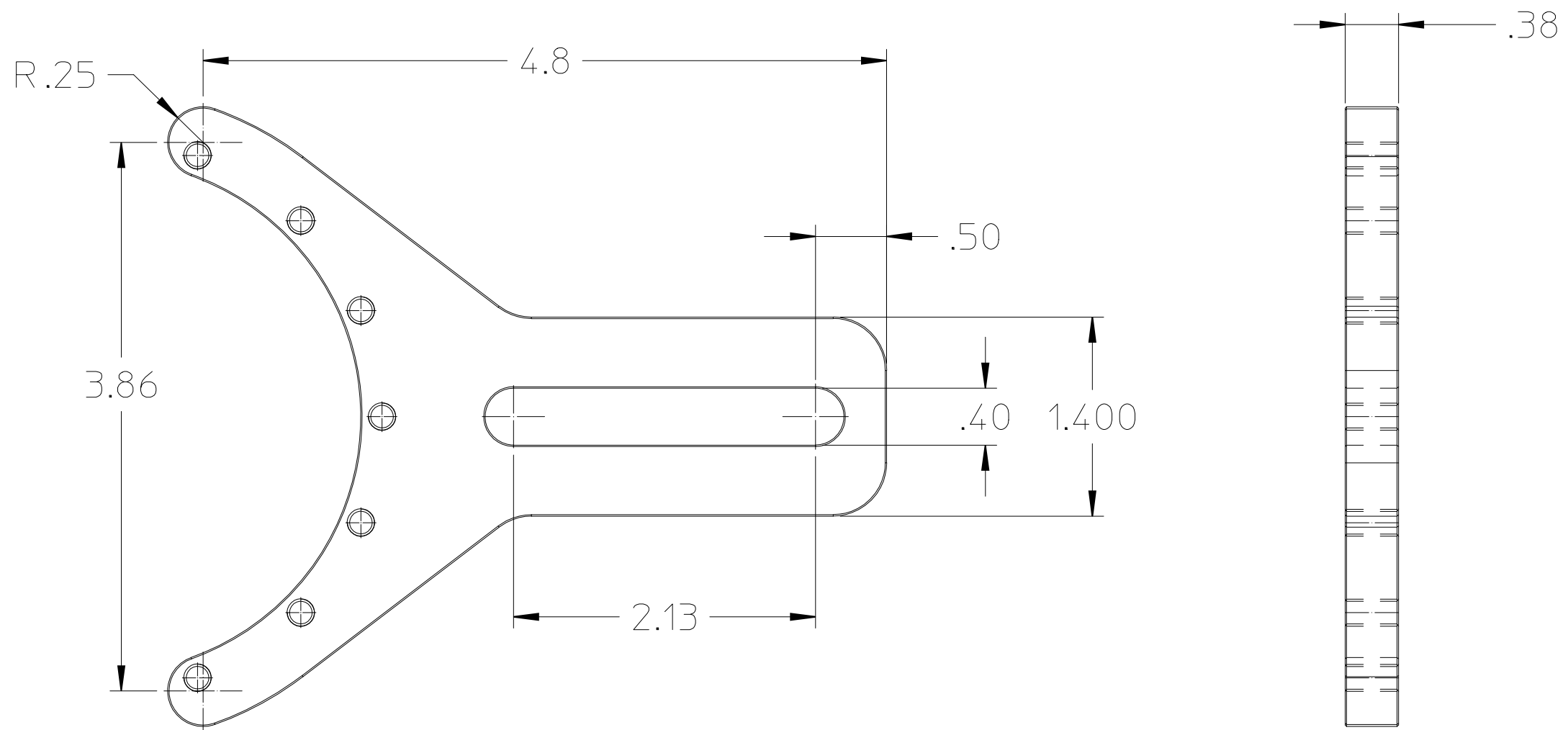
DRAWING NO.

STR.99.06.01

TOLERANCES UNLESS SPECIFIED		GEOMETRIC (INCHES)	
LINEAR (INCHES)	ANGULAR	LINEAR (INCHES)	ANGULAR
0.05--10 ± 0.005		0.05-10 ± 0.005	0.05-20 0.005
11--20 ± 0.010	0-90 ± 0.25°	11--20 ± 0.010	21--40 0.010
21--30 ± 0.015	91-180 ± 0.50°	21--30 ± 0.015	41--50 0.015
31--40 ± 0.020	181-270 ± 0.75°	31--40 ± 0.020	51--100 0.020
44--50 ± 0.030	271-360 ± 1.00°	44--50 ± 0.030	
51--100 ± 0.050		51--100 ± 0.050	



THIS DRAWING IS THE PROPERTY OF STAR MACHINE.
IT SHALL NOT BE DISCLOSED OR COPIED WITHOUT
THE WRITTEN AUTHORIZATION OF STAR MACHINE.



2				
1				
0				
REV.	REVISION DESCRIPTION			DATE
<i>star machine</i> 6618 Blackhead Road Baltimore, MD. 21220		DESCRIPTION RED MOUNTING BRACKET		
		HEAT TREATING	MATERIAL	
		HARDNESS	DEPTH	DESIGNED BY T HIGDON
		SURFACE PREPARATION		SCALE
		FINISH		SHEET 1 OF 1
				SIZE B
				DRAWING NO.
TOLERANCES UNLESS SPECIFIED LINEAR (INCHES) 0-.05 ± 0.005 .05-.10 ± 0.010 .10-.20 ± 0.015 .20-.30 ± 0.020 .30-.40 ± 0.030 .40-.50 ± 0.030 .50-1.00 ± 0.050 ANGULAR 0-90 ± 0.25° 91-180 ± 0.50° 181-270 ± 0.75° 271-360 ± 1.00° GEOMETRIC (INCHES) 0.05-10 ± 0.005 11-20 ± 0.010 21-30 ± 0.015 31-40 ± 0.020 44-50 ± 0.030 51-100 ± 0.050 0.002 0-100 0.015		BREAK ALL EDGES UNLESS SPECIFIED THIS DRAWING IS THE PROPERTY OF STAR MACHINE. IT SHALL NOT BE DISCLOSED OR COPIED WITHOUT THE WRITTEN AUTHORIZATION OF STAR MACHINE.		