

PULLEY DIAMETERS	
36T ALUMINUM (SHOWN)	Ø4.45
24T ALUMINUM	Ø3.00
24T COMPOSITE	Ø3.12
36T COMPOSITE	Ø4.53
40T COMPOSITE	Ø5.00

STAND LENGTH NOTES
 THE STANDARD LENGTH IS 2.25"
 STANDS AVAILABLE IN 0.25" INCREMENTS
 THE MINIMUM LENGTH IS 1.75"
 THE MAXIMUM LENGTH IS 3.50"
 CUSTOM LENGTHS AVAILABLE IF REQUIRED

"A" DIMENSIONS WITH 2.25" STAND	
WITH 36T ALUMINUM PULLEY (SHOWN)	5.09
WITH 24T ALUMINUM PULLEY	5.09
WITH 24T COMPOSITE PULLEY	5.37
WITH 36T COMPOSITE PULLEY	5.37
WITH 40T COMPOSITE PULLEY	5.37

"A" DIMENSIONS WITH 1.75" MINIMUM LENGTH STAND	
WITH 36T ALUMINUM PULLEY (SHOWN)	4.59
WITH 24T ALUMINUM PULLEY	4.59
WITH 24T COMPOSITE PULLEY	4.87
WITH 36T COMPOSITE PULLEY	4.87
WITH 40T COMPOSITE PULLEY	4.87

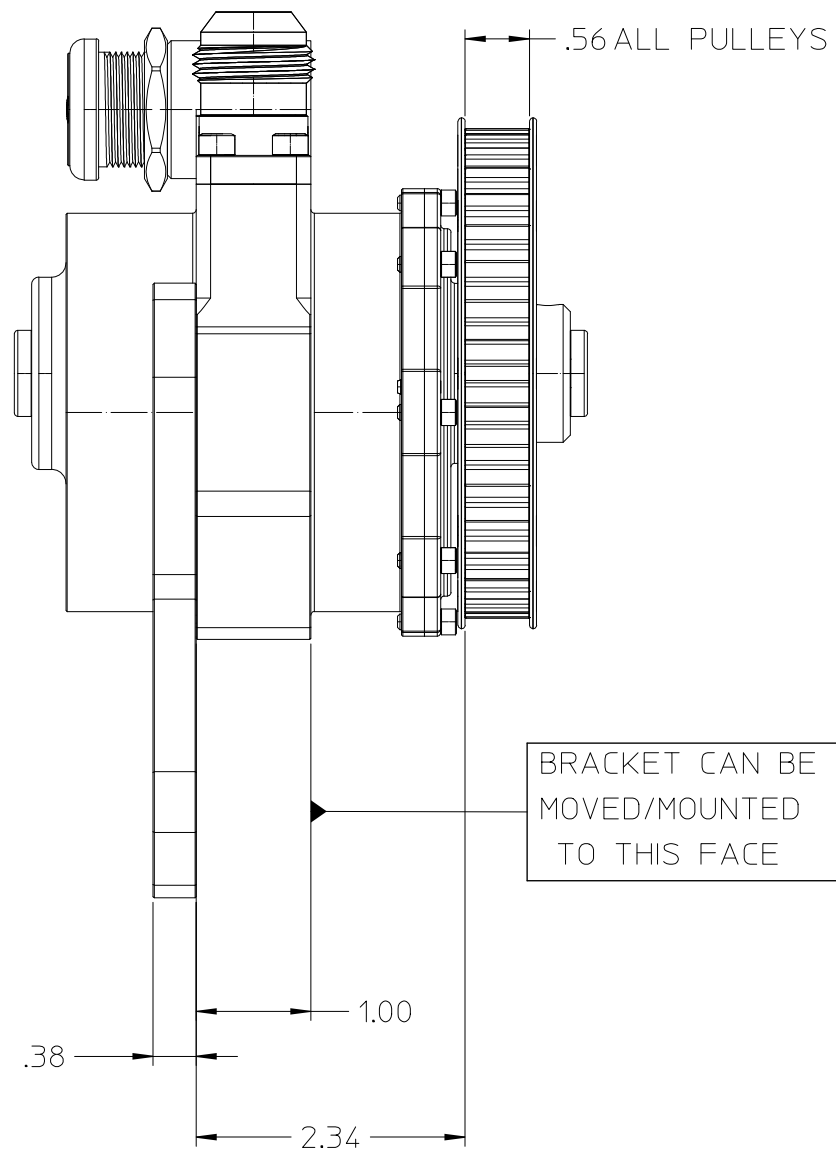
2		
1		
0		
REV.	REVISION DESCRIPTION	DATE
	DESCRIPTION LAYOUT DIMENSIONS, GEN2 STANDARD PUMP	
HEAT TREATING		MATERIAL
HARDNESS		DEPTH
SURFACE PREPARATION		DESIGNED BY T HIGDON
FINISH		SCALE SHEET SIZE
		1 OF 1 B
		DRAWING NO. STR.03.01.000

star machine
 6018 Blackhead Road
 Baltimore, MD. 21220

LINEAR (INCHES) ANGULAR
 0.05--10 ± 0.005 0.05--20 0.005
 11--20 ± 0.010 21--40 0.010
 21--30 ± 0.015 41--50 0.015
 31--40 ± 0.020 51--100 0.020
 44--50 ± 0.030 181-270 ± 0.75°
 51--100 ± 0.050 271-360 ± 1.00°

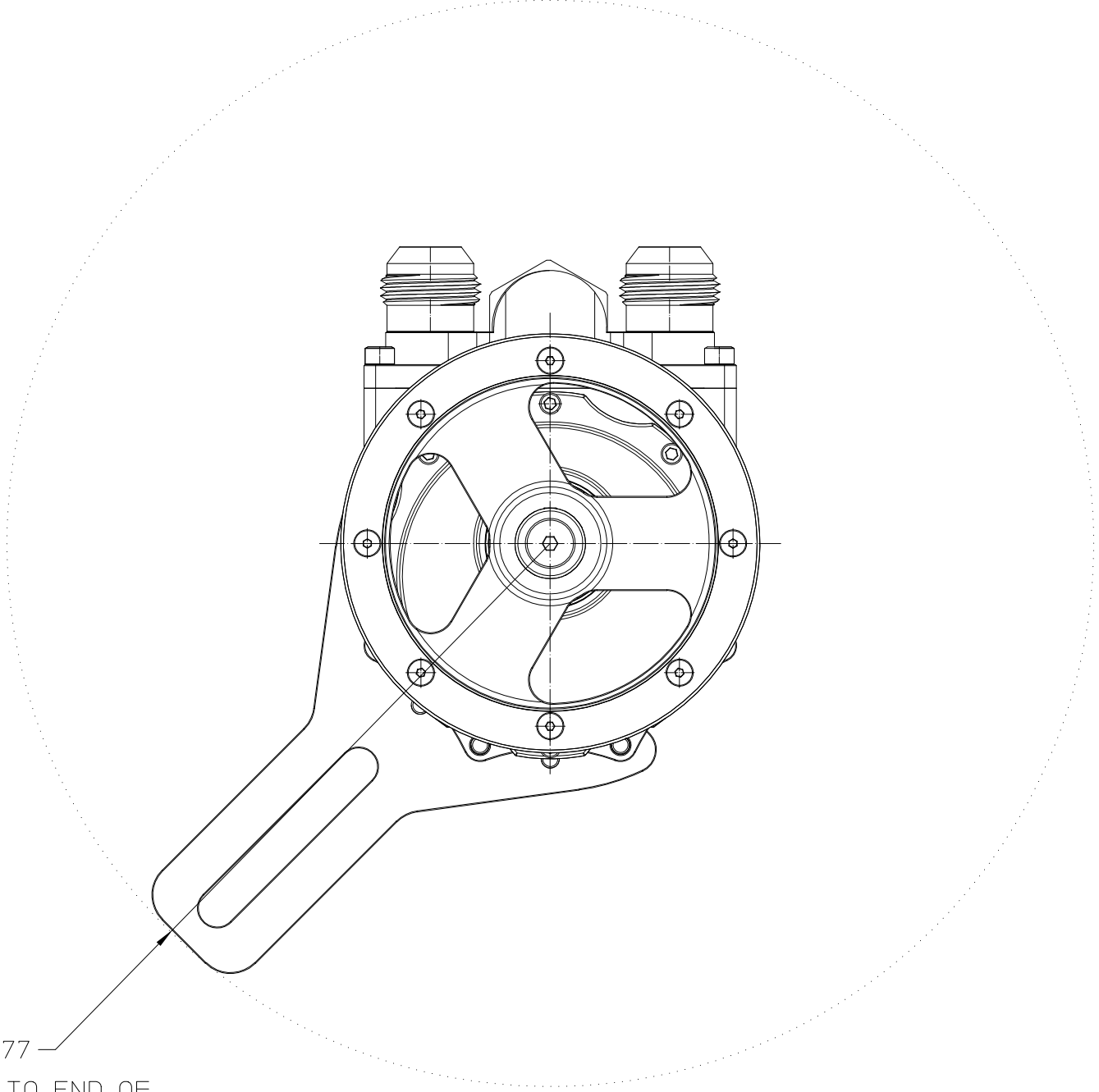
GEOMETRIC (INCHES)
 0.05--10 ± 0.005 0.05--20 0.005
 11--20 ± 0.010 21--40 0.010
 21--30 ± 0.015 41--50 0.015
 31--40 ± 0.020 51--100 0.020
 44--50 ± 0.030 181-270 ± 0.75°
 51--100 ± 0.050 271-360 ± 1.00°

THIS DRAWING IS THE PROPERTY OF STAR MACHINE.
 IT SHALL NOT BE DISCLOSED OR COPIED WITHOUT
 THE WRITTEN AUTHORIZATION OF STAR MACHINE.



5.77

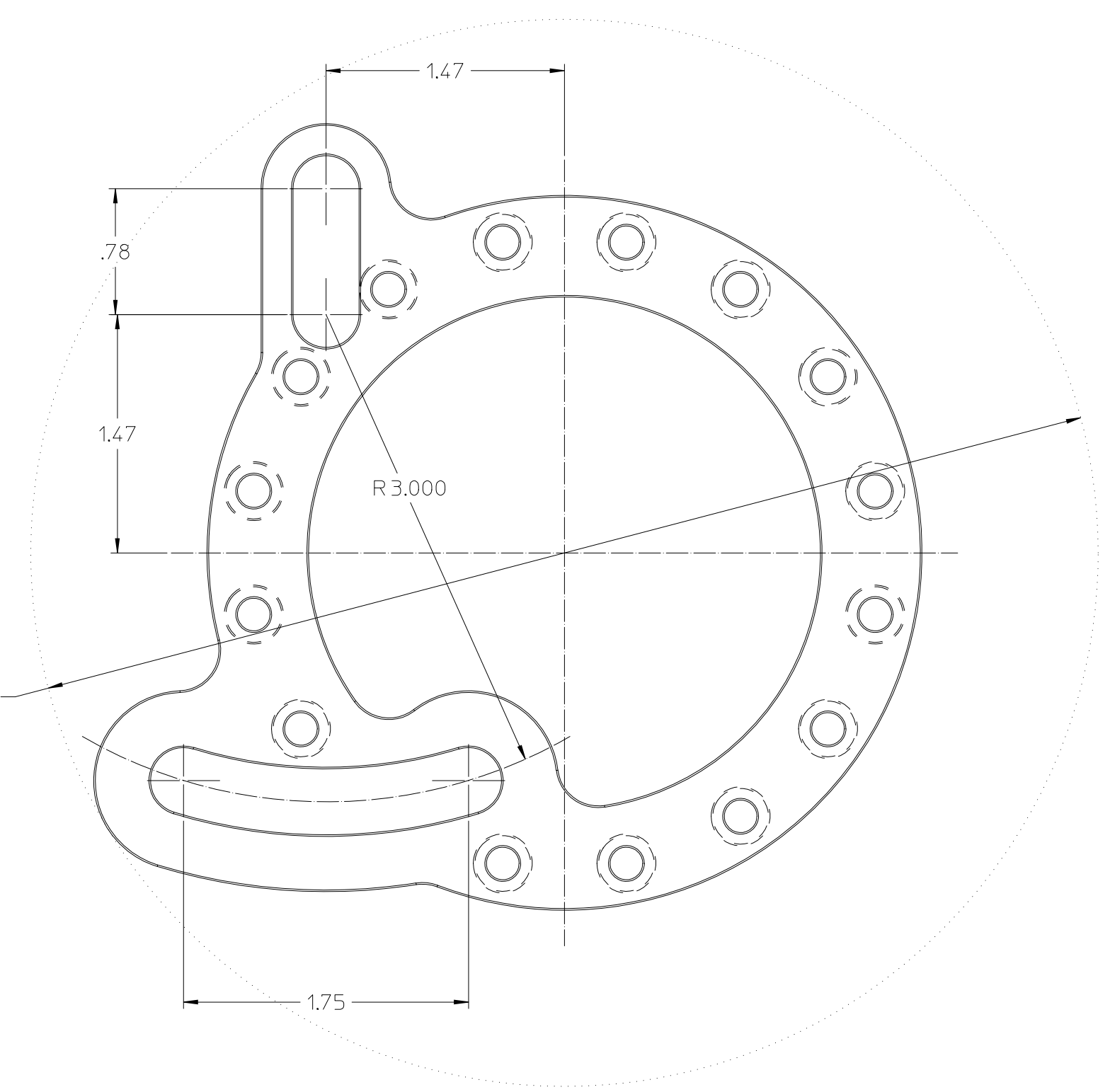
DIMENSION TO END OF BRACKET AS IT IS ROTATED ABOUT PUMP CENTER (BRACKET CAN BE ROTATED/FASTENED EVERY 22.5°)



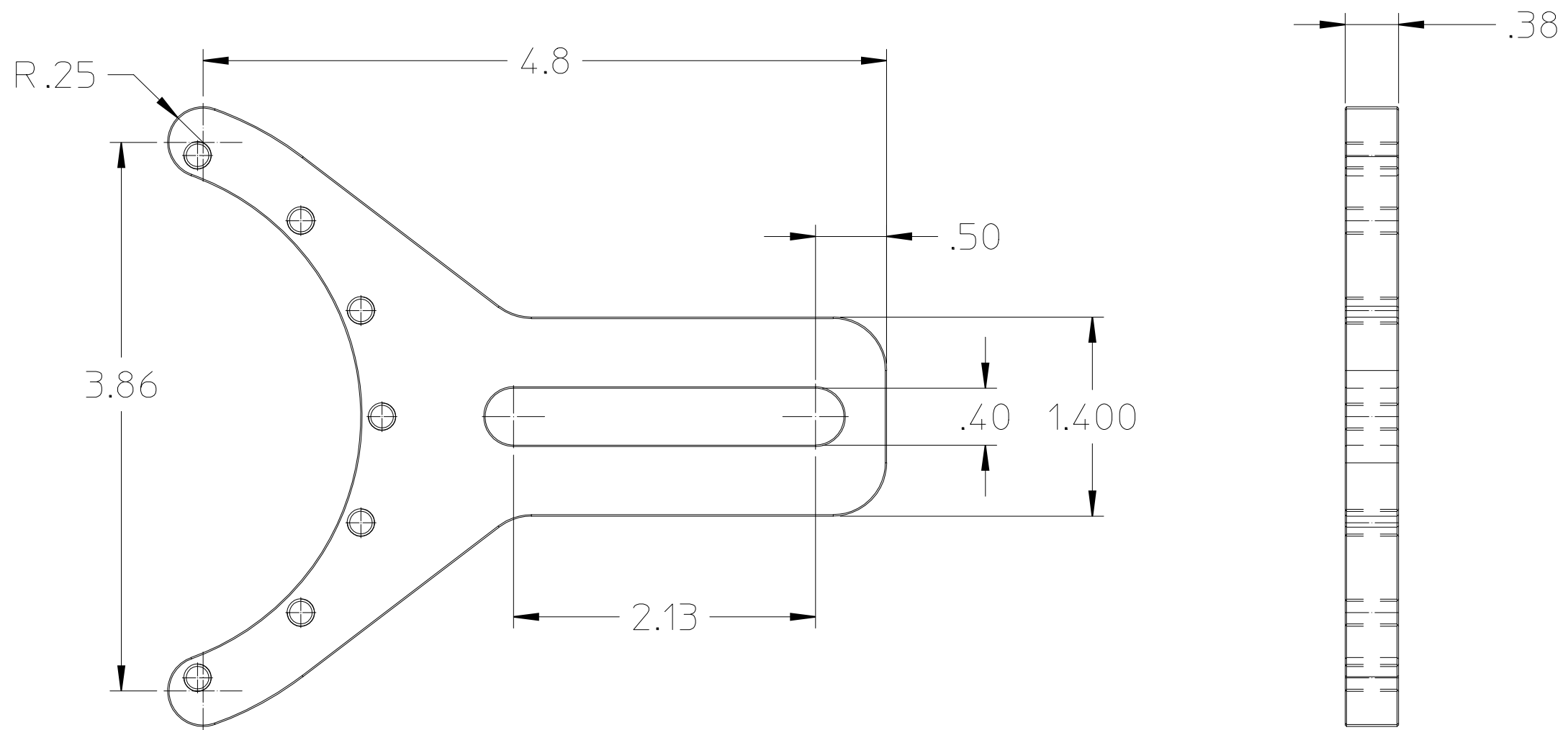
"A" DIMENSIONS WITH 2.25" STAND	
WITH 36T ALUMINUM PULLEY (SHOWN)	2.34
WITH 24T ALUMINUM PULLEY	2.34
WITH 24T COMPOSITE PULLEY	2.62
WITH 36T COMPOSITE PULLEY	2.62
WITH 40T COMPOSITE PULLEY	2.62

2		
1		
0		
REV.	REVISION DESCRIPTION	DATE
star machine 6018 Blackhead Road Baltimore, MD. 21220		
DESCRIPTION		LAYOUT DIMENSIONS, GEN2 PUMP WITH RED BRKT.
HEAT TREATING		MATERIAL
HARDNESS		DEPTH
SURFACE PREPARATION		DESIGNED BY T HIGDON
FINISH		SCALE SHEET SIZE 1 OF 1 B
TOLERANCES (UNLESS SPECIFIED) LINEAR (INCHES) 0.05--10 ± 0.005 11--20 ± 0.010 21--30 ± 0.015 31--40 ± 0.020 44--50 ± 0.030 51--100 ± 0.050 ANGULAR 0-90 ± 0.25° 91-180 ± 0.50° 181-270 ± 0.75° 271-360 ± 1.00° GEOMETRIC (INCHES) 0.05--10 ± 0.005 11--20 ± 0.010 21--30 ± 0.015 31--40 ± 0.020 44--50 ± 0.030 51--100 ± 0.050 BREAK ALL EDGES (UNLESS SPECIFIED)		THIS DRAWING IS THE PROPERTY OF STAR MACHINE. IT SHALL NOT BE DISCLOSED OR COPIED WITHOUT THE WRITTEN AUTHORIZATION OF STAR MACHINE.

Ø 6.6
OVERALL SPACE REQUIREMENT
FOR "Q" BRACKET



2		
1		
0		
REV.	REVISION DESCRIPTION	DATE
<i>star machine</i> 6018 Blackhead Road Baltimore, MD. 21220		DESCRIPTION "Q" BRACKET LAYOUT DIMENSIONS HEAT TREATING MATERIAL HARDNESS DEPTH DESIGNED BY T HIGDON SURFACE PREPARATION SCALE SHEET SIZE 2 OF 2 B DRAWING NO.
TOLERANCES UNLESS SPECIFIED: LINEAR (INCHES) 0.05--10 ± 0.005 11--20 ± 0.010 21--30 ± 0.015 31--40 ± 0.020 44--50 ± 0.030 51--100 ± 0.050 ANGULAR 0-90 ± 0.25° 91-180 ± 0.50° 181-270 ± 0.75° 271-360 ± 1.00°		FINISH BREAK ALL EDGES UNLESS SPECIFIED THIS DRAWING IS THE PROPERTY OF STAR MACHINE. IT SHALL NOT BE DISCLOSED OR COPIED WITHOUT THE WRITTEN AUTHORIZATION OF STAR MACHINE.



2																															
1																															
0																															
REV.	REVISION DESCRIPTION			DATE																											
<i>star machine</i> 6618 Blackhead Road Baltimore, MD. 21220		DESCRIPTION RED MOUNTING BRACKET																													
		HEAT TREATING	MATERIAL																												
		HARDNESS	DEPTH	DESIGNED BY T HIGDON																											
		SURFACE PREPARATION		SCALE																											
		FINISH		SHEET 1 OF 1																											
				SIZE B																											
				DRAWING NO.																											
TOLERANCES UNLESS SPECIFIED <table border="1"> <tr> <th>LINEAR (INCHES)</th> <th>ANGULAR</th> </tr> <tr> <td>0.05--10 ± 0.005</td> <td>0-90 ± 0.25°</td> </tr> <tr> <td>11--20 ± 0.010</td> <td>91-180 ± 0.50°</td> </tr> <tr> <td>21--30 ± 0.015</td> <td>181-270 ± 0.75°</td> </tr> <tr> <td>31--40 ± 0.020</td> <td>271-360 ± 1.00°</td> </tr> <tr> <td>44--50 ± 0.030</td> <td></td> </tr> <tr> <td>51--100 ± 0.050</td> <td></td> </tr> </table>		LINEAR (INCHES)	ANGULAR	0.05--10 ± 0.005	0-90 ± 0.25°	11--20 ± 0.010	91-180 ± 0.50°	21--30 ± 0.015	181-270 ± 0.75°	31--40 ± 0.020	271-360 ± 1.00°	44--50 ± 0.030		51--100 ± 0.050		BREAK ALL EDGES UNLESS SPECIFIED <table border="1"> <tr> <th>GEOMETRIC (INCHES)</th> <th></th> </tr> <tr> <td>0.05-10 ± 0.005</td> <td>0.05-20 0.005</td> </tr> <tr> <td>11--20 ± 0.010</td> <td>21--40 0.010</td> </tr> <tr> <td>21--30 ± 0.015</td> <td>41--50 0.015</td> </tr> <tr> <td>31--40 ± 0.020</td> <td>51--100 0.020</td> </tr> <tr> <td>44--50 ± 0.030</td> <td></td> </tr> <tr> <td>51--100 ± 0.050</td> <td>0.002 0-100 0.015</td> </tr> </table>		GEOMETRIC (INCHES)		0.05-10 ± 0.005	0.05-20 0.005	11--20 ± 0.010	21--40 0.010	21--30 ± 0.015	41--50 0.015	31--40 ± 0.020	51--100 0.020	44--50 ± 0.030		51--100 ± 0.050	0.002 0-100 0.015
LINEAR (INCHES)	ANGULAR																														
0.05--10 ± 0.005	0-90 ± 0.25°																														
11--20 ± 0.010	91-180 ± 0.50°																														
21--30 ± 0.015	181-270 ± 0.75°																														
31--40 ± 0.020	271-360 ± 1.00°																														
44--50 ± 0.030																															
51--100 ± 0.050																															
GEOMETRIC (INCHES)																															
0.05-10 ± 0.005	0.05-20 0.005																														
11--20 ± 0.010	21--40 0.010																														
21--30 ± 0.015	41--50 0.015																														
31--40 ± 0.020	51--100 0.020																														
44--50 ± 0.030																															
51--100 ± 0.050	0.002 0-100 0.015																														
		THIS DRAWING IS THE PROPERTY OF STAR MACHINE. IT SHALL NOT BE DISCLOSED OR COPIED WITHOUT THE WRITTEN AUTHORIZATION OF STAR MACHINE.																													